

July 23, 2011

Renee Dotson presented a wonderful program this month on "How Did You Do That?"

There were ideas on textured surfaces and many new techniques. Thanks Renee!

Joann Tyler announced her class at the Tulsa Art Center on Wet in Wet. Information is on line at [Tulsaartcenter.com](http://Tulsaartcenter.com) or call 918-615-3480

*The "Share an Idea" portion of our meeting this past week was presented first by Francie Johnson, who spoke about work from Alice Woodrome that combines stitching and painting.*

*Joann Tyler also talked about her wet into wet painting technique.*

**Would you like to "Share an Idea"? Contact Jim Buchan to schedule it.**

**Commit Random Acts of Art**

**Next Month's Program: OSU Scholarship Winner Lopita Tawde will speak at our August 11th meeting, as well as Jack Titus, OSU Professor.**

**Let's have a great turnout!**

## WILL ON THE HILL

On July 9<sup>th</sup> we delivered paintings to RSU's new gallery and found an absolutely beautiful space.



There was enough room to hang every painting with a spotlight on it.



Thanks to Renee Dotson and her staff of volunteers: Jo Lynch, Greg Motto, Ken Lynch, Dale Treeman, Chris Cameris, and Jim Buchan. They did a great job!

**Remember to pick up your paintings on July 28<sup>th</sup>, from 10:00 a.m. to 11:00 a.m.**



## Exhibits

**Will on the Hill:** Rogers State University in Claremore: July 8 through July 28, 2011. **Important dates:** July 28, 10:00 – 11:00, pick up Paintings

**GCWS 7<sup>th</sup> Annual Members' Juried Exhibit:** TCC South, August 27 through September 22, 2011. Juror is Lance Hunter from NSU. **Important Dates:** August 11, Entry Deadline; August 25, 2:00 - 3:00, Delivery of Paintings; Judging, Aug. 26; September 1, 5:30 – 7:30, Reception; September 23, 2:00 – 3:00, Pick Up Paintings.

**Festival of Smalls:** Your Design, 211 S. Main St., Broken Arrow. Images limited to no larger than 10"x10". **Important Dates:** October 13, Entry Deadline; November 1, 10:00 – 11:00, Delivery of Paintings; November 3, 5:30 to 8:00 Reception; November 30, 10:00 – 11:00, Pick Up Paintings.

July 23, 2011



### Reminders about our Juried Show requirements:

Art work will be primarily aqueous medium on paper.

Water media collage, if used, should represent no more than 25 percent of the piece. No varnish should be used.

Work will be original – not based on photos other than the artist's own and not done under instruction.

Work will have been completed within the last two years.

### Presentation and Conditions:

Image size may be no smaller than 10" in any direction: framed size is limited to 48" in any direction.

Attach entry tag to the back upper left hand corner.

Top mat will be white or off white; a colored inner liner not to exceed ½ inch may be used.

GCWC Society reserves the right to reject any paintings.

### Gallery Standards:

Paintings must be presentable: all works must be clean on the surface and between the glass or plexi glass and the painting. All dust and fingerprints are to be removed.

Frames are to be sturdy, scratch and dent free, clean, and have tight corners.

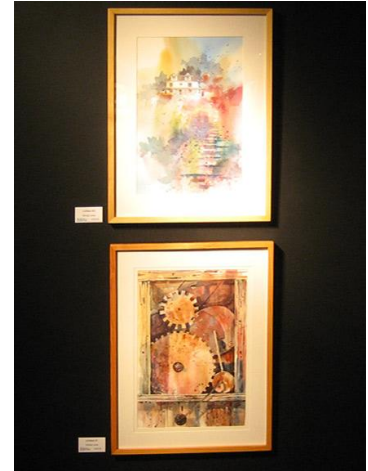
Wire: picture wire only, placed one fifth of the way down, pulled tight, looped through hangers.

Frames: Metal frame backing: foam-core or clean mat board (No cardboard). Wood frames must have full dust covers.

Entry forms are available on the web-site:  
[www.gcwatercolorokla.com](http://www.gcwatercolorokla.com)

If you need an entry form mailed to you, please contact Renee Dotson at

918-355-8428



*After the great show at RSU, we are all now very excited about the Members Juried Show coming up in August.*

*It is time to have your ideas coming to fruition on paper! The deadline for entries is August 11, which is our meeting date. We are looking forward to another wonderful show!*



*Even the fly on the wall enjoyed the show at RSU! Thanks Greg for taking the pictures!*